
Social Narrative

Museum of Natural History

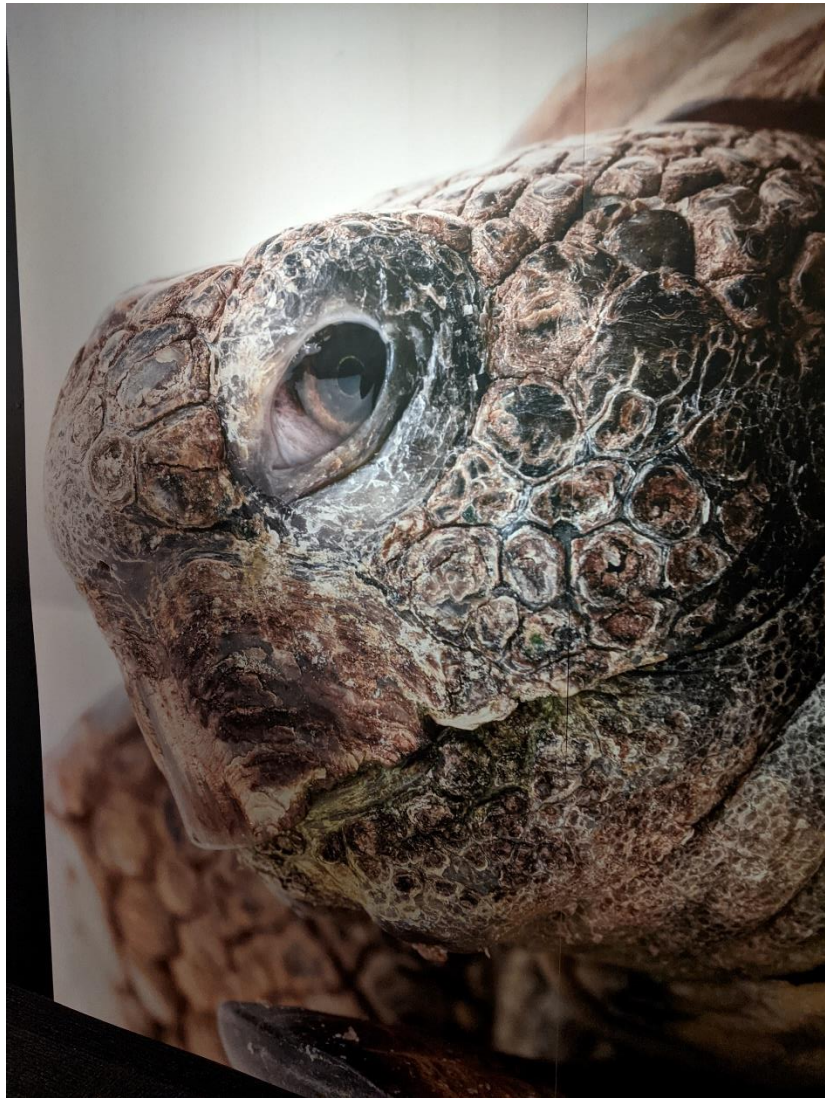


In partnership with Autism Nova Scotia

Today I am going to visit the WonderFULL exhibit at the Museum of Natural History. When I go up the ramp into the galleries, I will see a sign that shows me where the Wonderful exhibit starts. The sign looks like this:



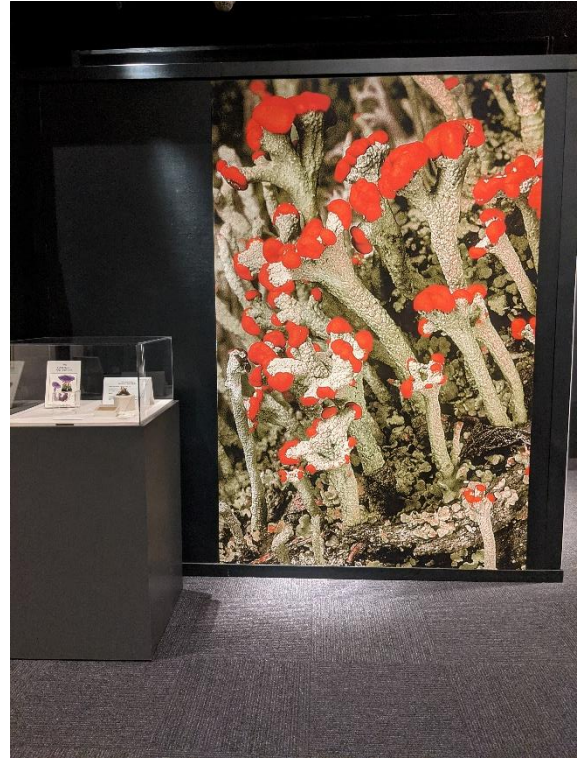
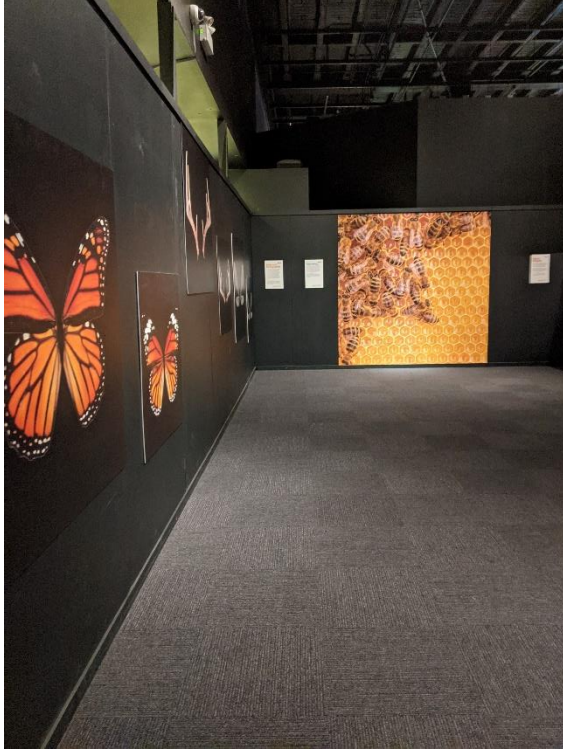
I will walk down a hallway to the exhibit. I will see a big picture of Gus the Gopher Tortoise at the end of the hallway. It looks like this:



Green stickers on the floor show me the direction to travel through the museum.



The exhibit is a safe place for me to see some beautiful pictures and things from the museum's collections. I can take pictures in the museum.



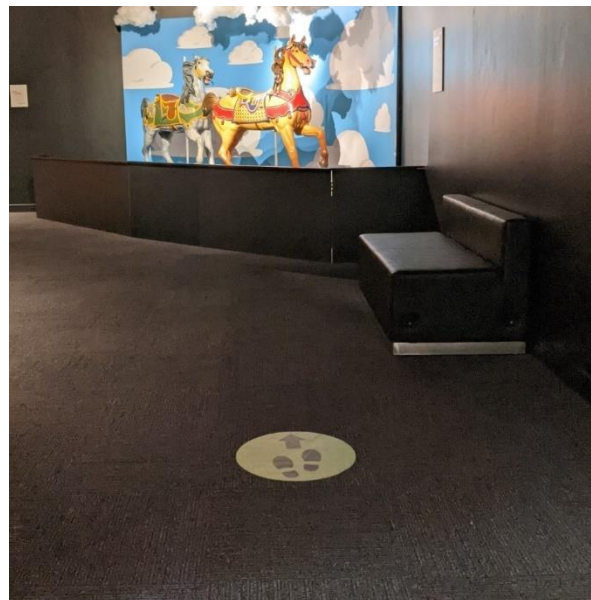
I may see signs asking me not to touch something. The sign looks like this:



Some things will be in cases or behind barriers to keep them safe. I will follow the museum's rules and not tap on the case glass or go over the barriers.



There are seats in the museum if I need to take a rest.



When I have finished with the WonderFULL exhibit, there is still lots more to see in the museum. I will follow the floor stickers and socially distance from others.

