
Social Narrative

Museum of Natural History



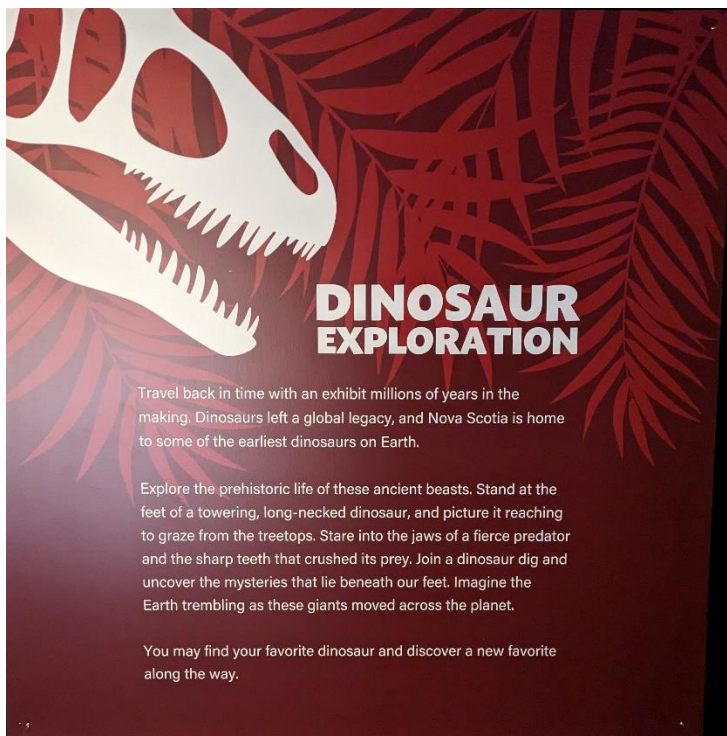
In partnership with Autism Nova Scotia



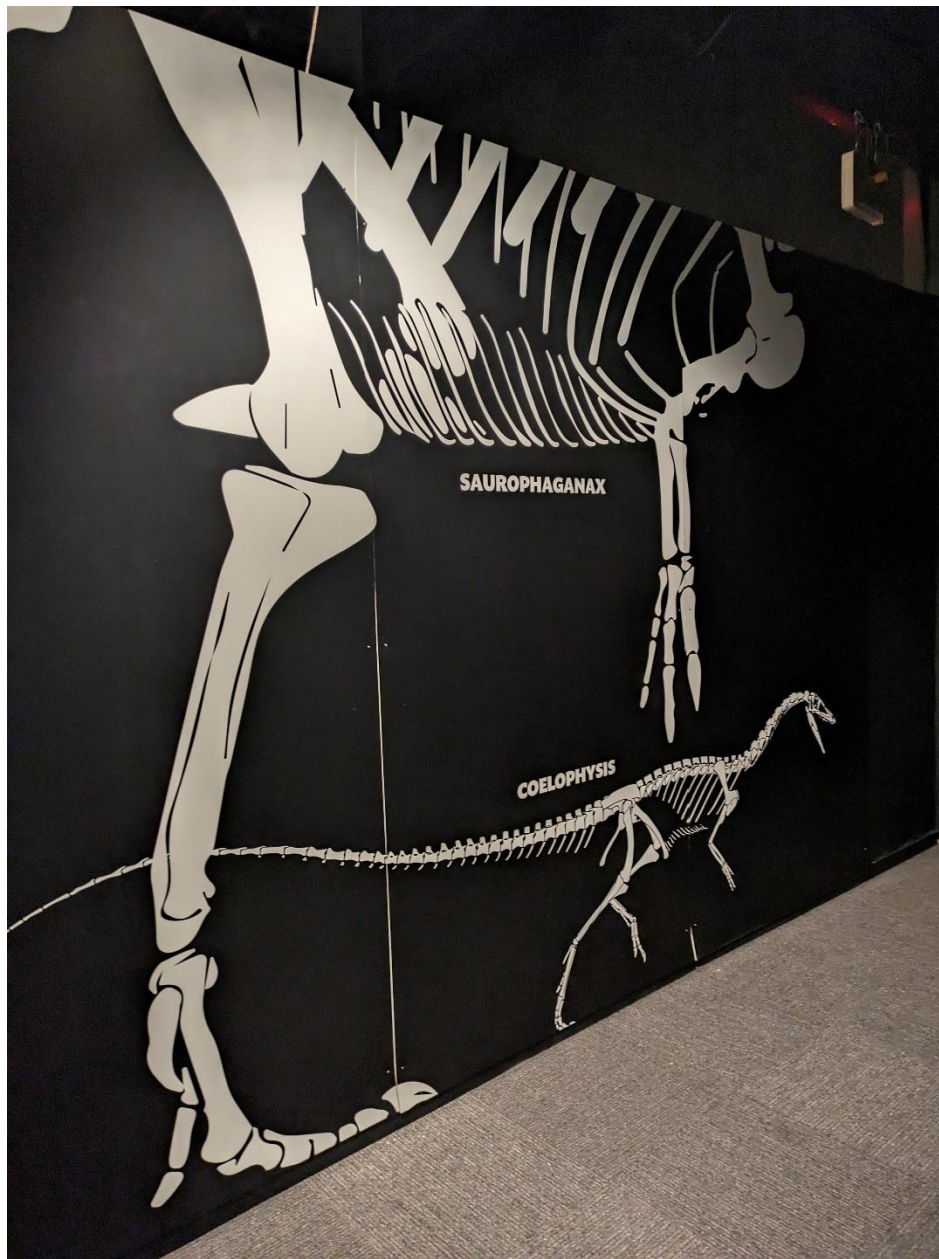
Today I am going to visit the Dinosaur Exploration exhibit at the Museum of Natural History. When I go up the ramp into the galleries, I will see a sign that points me to the Dinosaur Exploration exhibit that looks like this:



The beginning of the exhibit has a sign that looks like this:



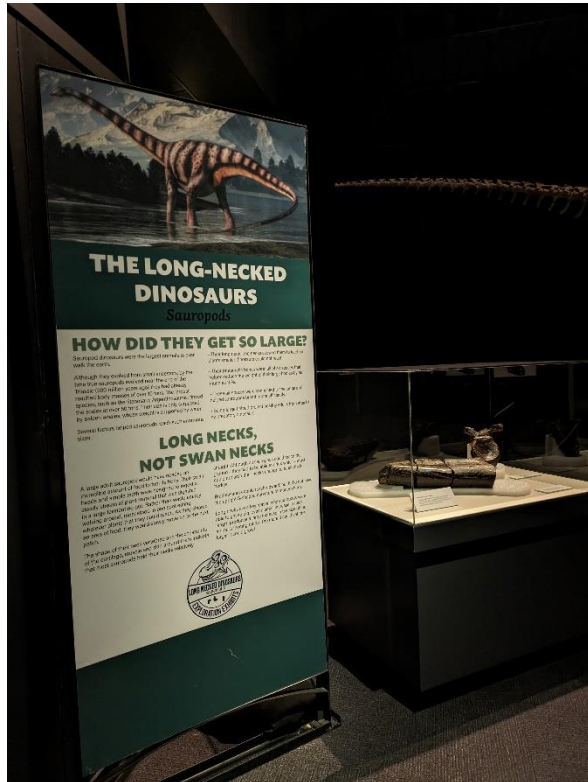
I will walk down a hallway with images of dinosaur skeletons on my way into the exhibit.



The exhibit is a safe place for me to learn about dinosaurs. I can take pictures in the museum for my own personal use.



Some things will be in cases or behind barriers to keep them safe. I will follow the museum's rules and not tap on the case glass or go over the barriers.



There is a dig box where I can uncover dinosaur bones.



There are seats in the museum if I need to take a rest.



I can look at dinosaur books in the exhibit. I will leave the books on the shelf when I am done for the next person to enjoy.



I can see dinosaur skulls and full skeletons. I will follow the museum rules and not touch them.



When I have finished with the Dinosaur Exploration exhibit, I can visit the rest of the museum.