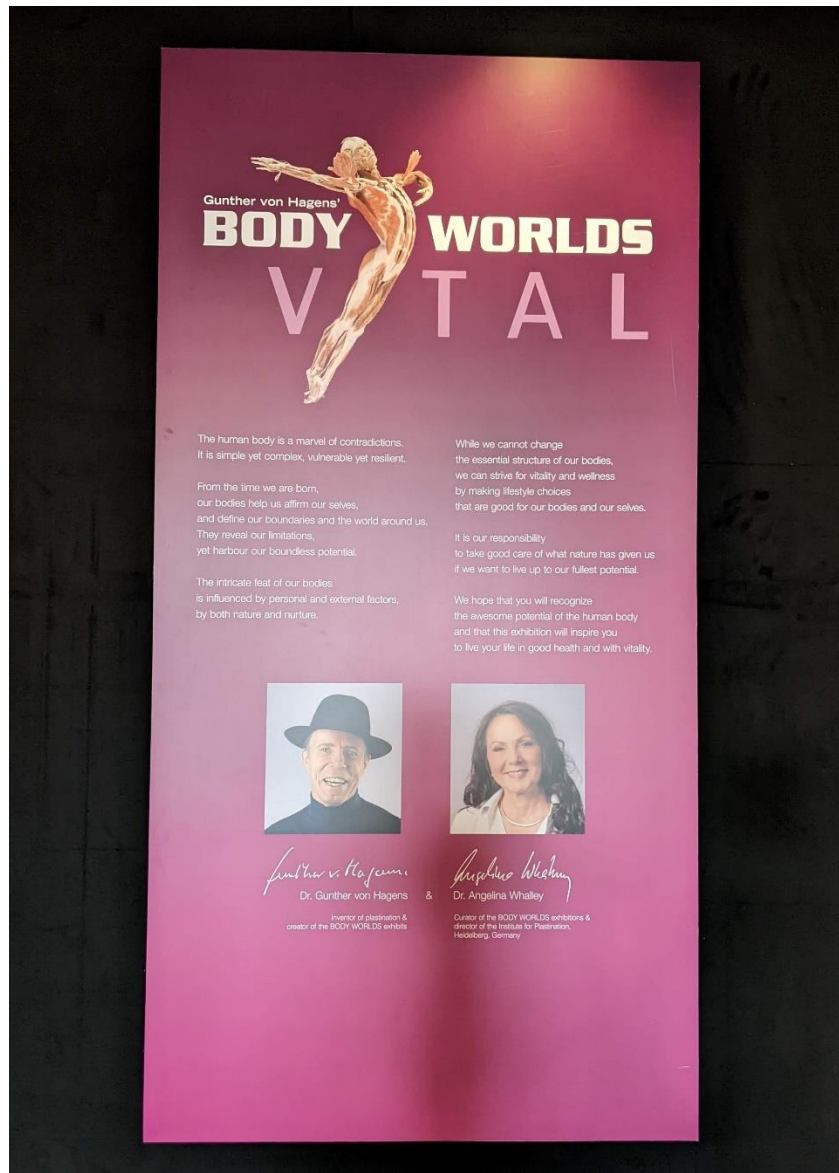

Social Narrative

Museum of Natural History



In partnership with Autism Nova Scotia

Today I am going to visit the Body Worlds Vital exhibit at the Museum of Natural History. When I go up the ramp into the galleries, I will see a sign that shows me where the Body Worlds Vital exhibit starts. The sign looks like this:



I will also see some stickers on the floor showing me how to get to the exhibit. The stickers look like this:



At the beginning of the exhibit, I will see a specimen that looks like this:



The exhibit is a safe place for me to learn about my body. I can take pictures in the museum for my own personal use.

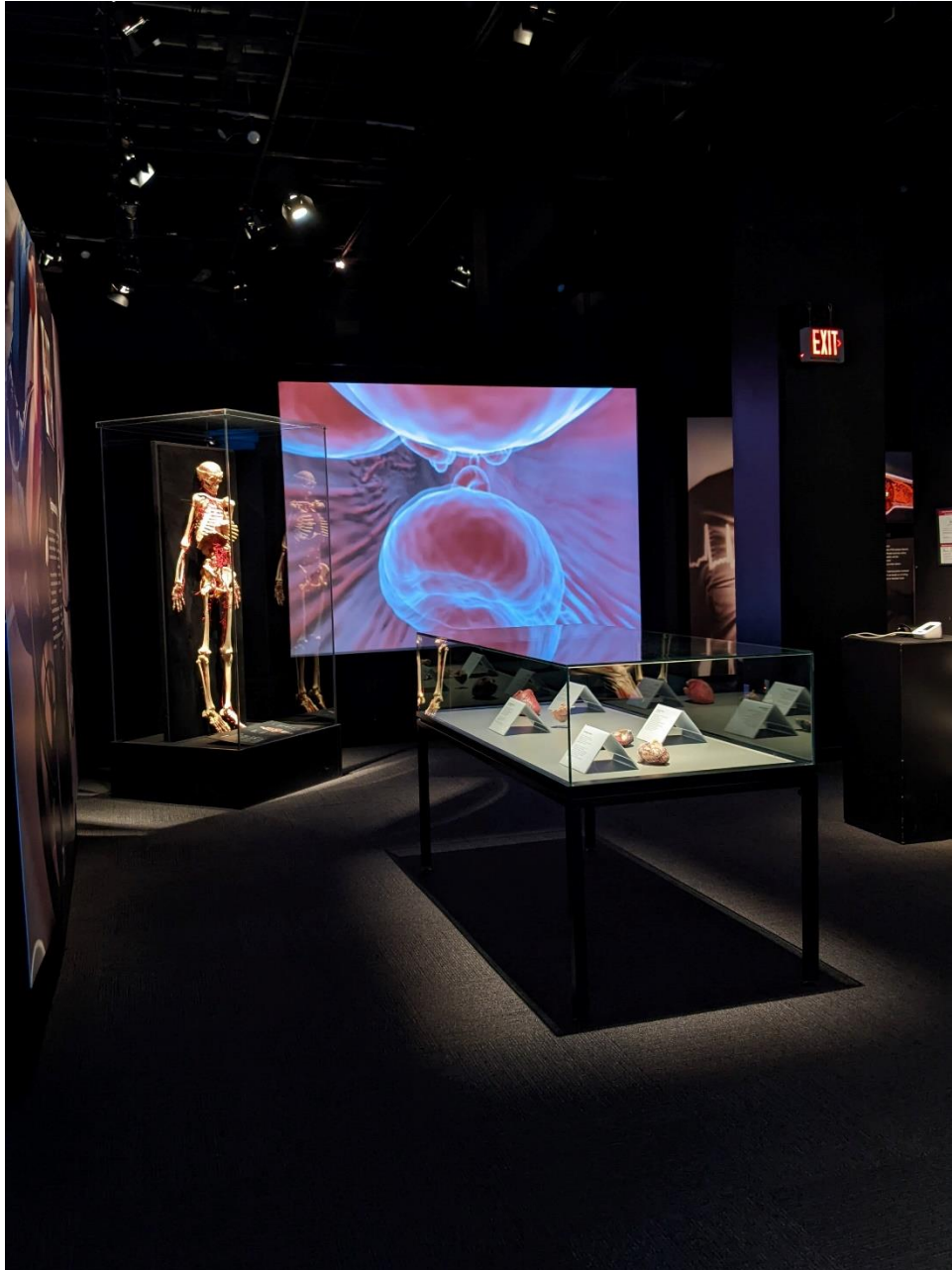


Some things will be in cases or behind barriers to keep them safe. I will follow the museum's rules and not tap on the case glass or go over the barriers.

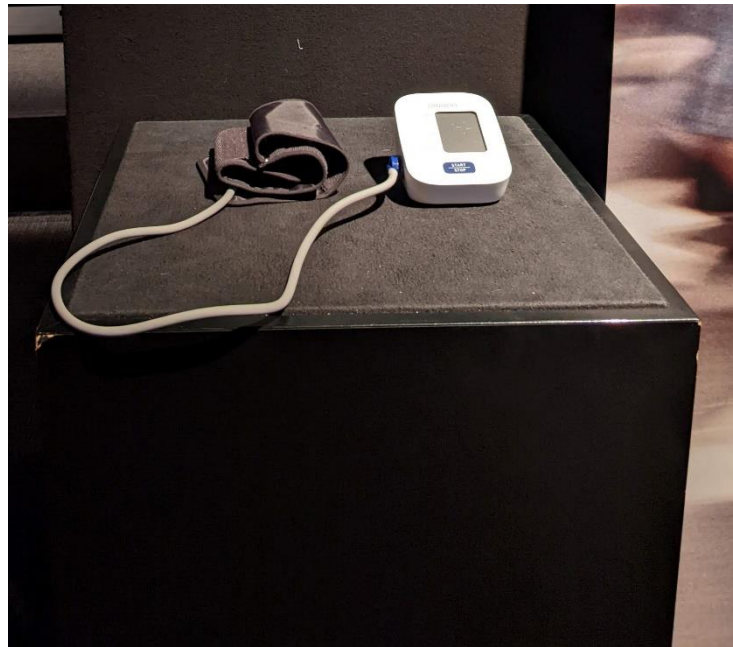
I will see signs beside things that are not behind glass that I cannot touch.
I will follow the museum rules.



There are some TV and projection screens in the exhibit that I can watch.



There are some things in the exhibit that I can touch. They are not behind a barrier or in a case. I can gently touch them. They look like this:



There are seats in the museum if I need to take a rest.



When I have finished with the Body Worlds Vital exhibit, I can visit the marine gallery or go back to where I came in.

